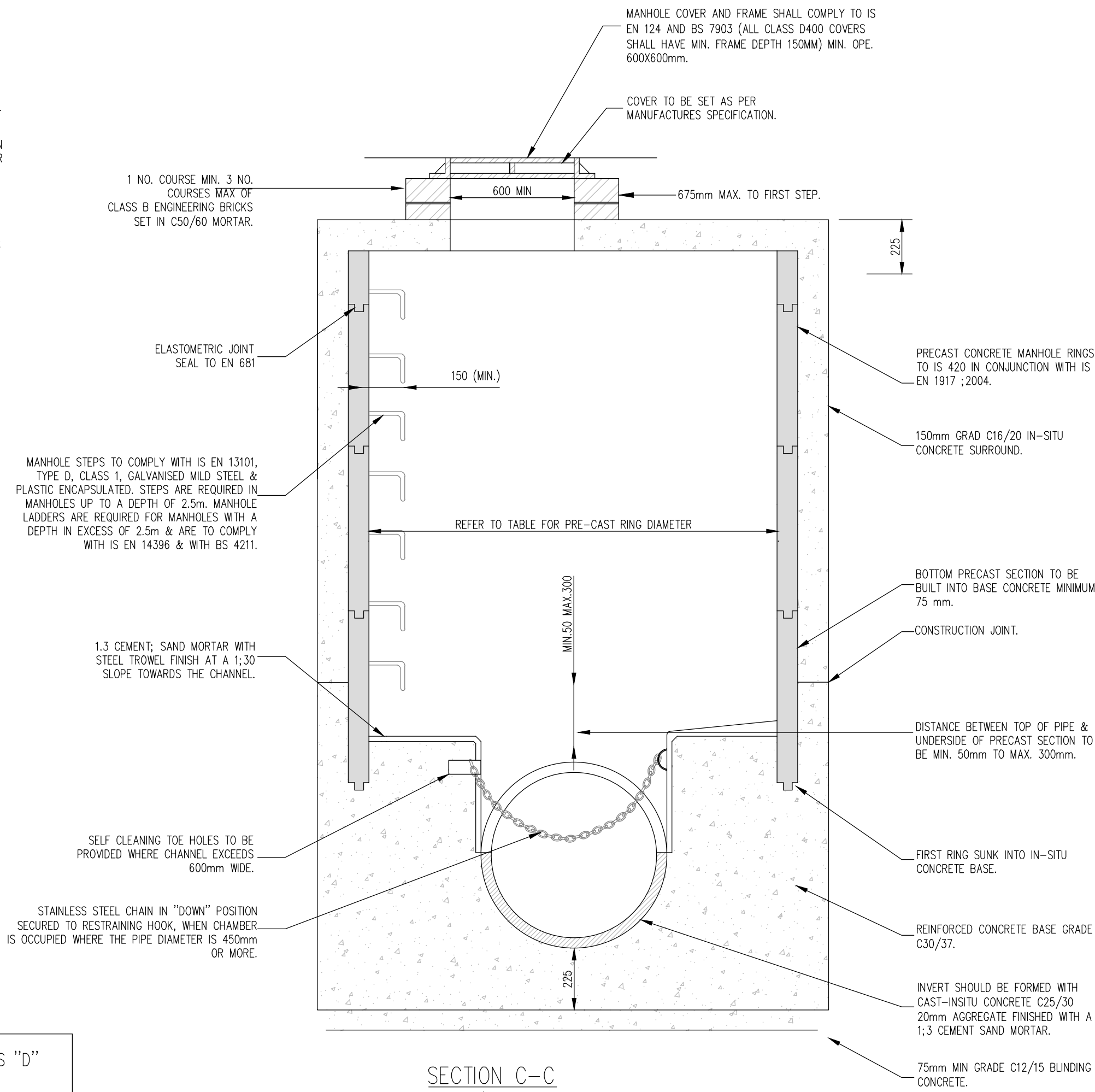
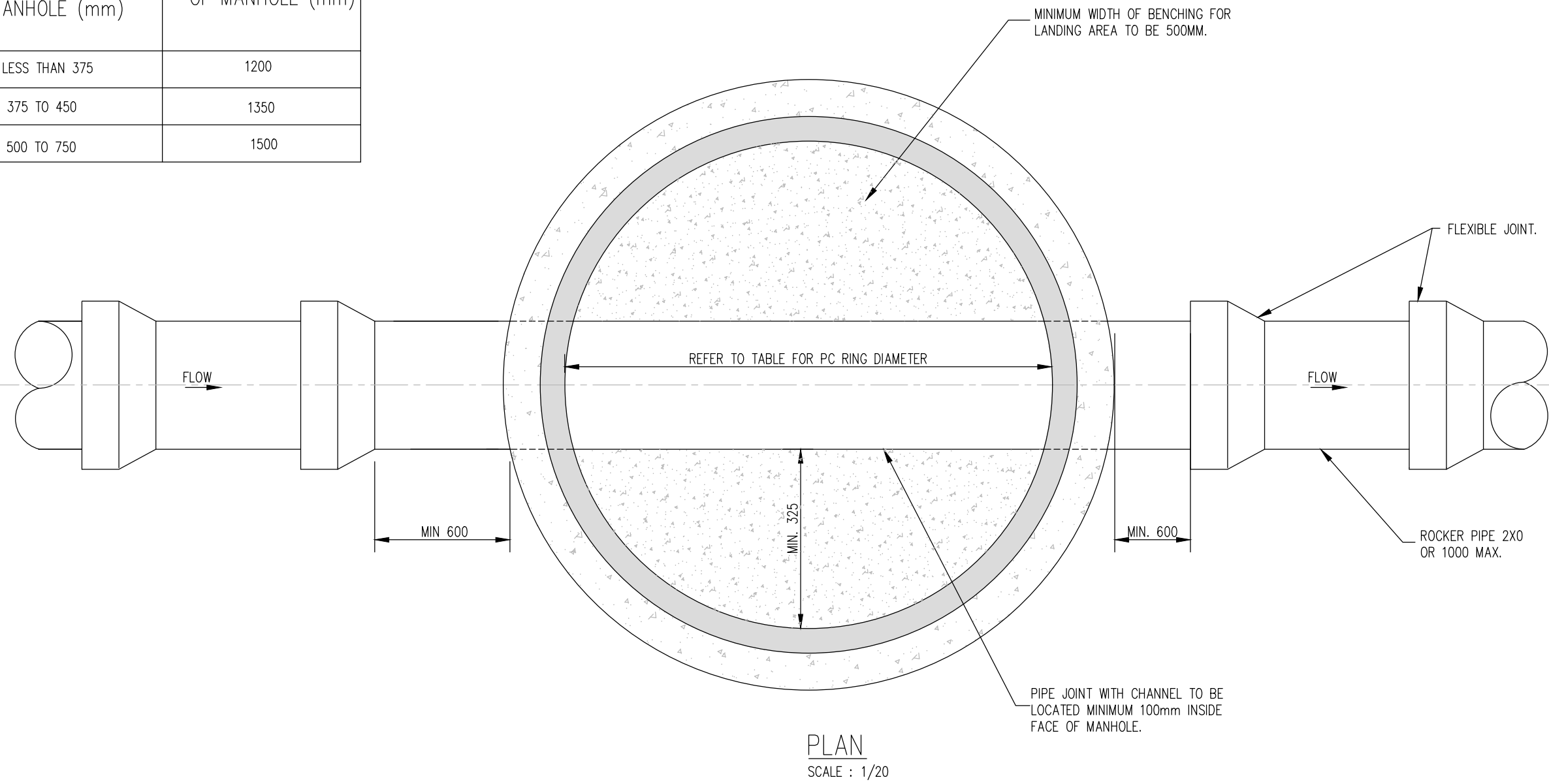


PRECAST CONCRETE MANHOLE (<450mm DIA)
STD-WW-10

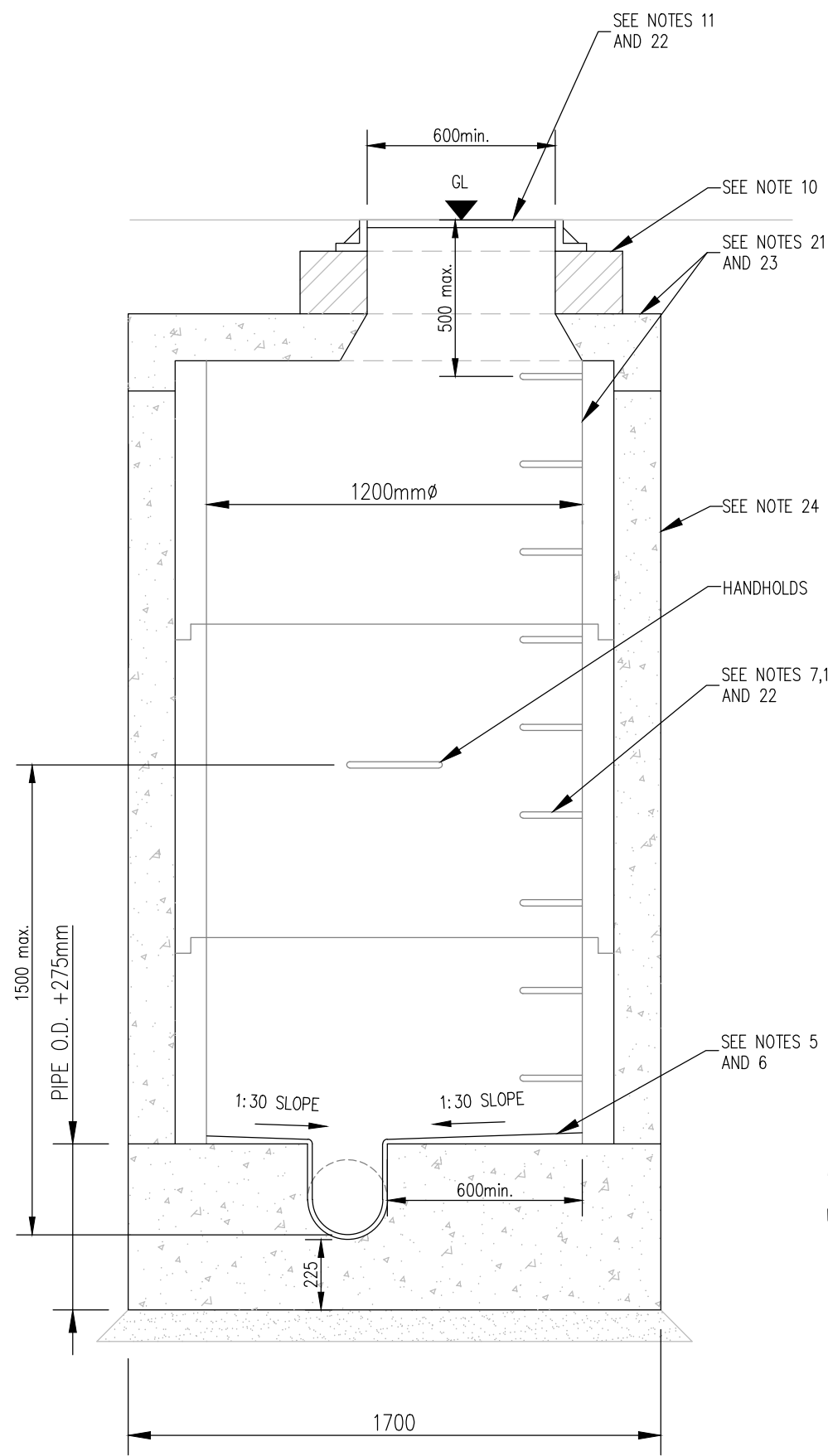
1. ALL DIMENSIONS ARE IN MILLIMETERS (mm)
UNLESS NOTED OTHERWISE.
2. PRECAST MANHOLES UNITS; COMPLYING WITH
REQUIREMENTS OF IS EN 1917 AND BS 5911-PART 3.
3. THICKER MANHOLE BASE REQUIRED FOR SEWERS IN
EXCESS OF 3m DEEP WHERE THE SIZE IS GREATER
THAN STANDARD.
4. APPROVED PRE-CAST CONCRETE BASES MAY BE
USED INCORPORATING CHANNELS, BENCHING ETC.
SUBJECT TO IRISH WATER APPROVAL AND
COMPLY WITH BS 5911-PART 3.
5. STRUCTURAL DESIGN AND REINFORCEMENT DETAILS
TO BE PROVIDED BY THE DEVELOPER AND
SUBMITTED TO IRISH WATER FOR REVIEW.
6. MANHOLES GREATER THAN 3m IN DEPTH WILL
REQUIRE REINFORCED CONCRETE BASES AND ARE
SUBJECT TO IRISH WATER APPROVAL.
7. MANHOLE ROOFS SHOULD CONSIST OF
RE-INFORCED CONCRETE SLAB OF IN-SITU
CONCRETE 150/25, WITH A MINIMUM THICKNESS
OF 225mm DESIGNED TO CARRY ALL LIVE AND
DEAD LOADS, ALTERNATIVELY APPROVED
PRE-CAST CONCRETE ROOF SLABS MAY BE USED
SUBJECT TO IRISH WATER APPROVAL AND
COMPLYANCE WITH BS 5911 PART 4; 2002.
8. COVER AND FRAMES SHALL BE SUITABLE FOR
ROAD AND TRAFFIC CONDITIONS SUBJECT TO
APPROVAL FROM IRISH WATER.
9. 200mm ALL AROUND, 100mm DEEP CONCRETE
PUNING WITH PROTECTIVE STAINLESS STEEL METAL
BAND AROUND COVERS IN GREEN AREAS.
10. MEASURES TO BE TAKEN TO PREVENT SLOTTED BY
THE DEVELOPER BASED ON GROUND CONDITIONS
WITHIN THE SITE. SHOULD ANI FLOTATION
MEASURES BE REQUIRED THEY SHALL BE
SUBMITTED TO APPROVAL FROM IRISH WATER.
11. ALL CONCRETE TO BE IN ACCORDANCE WITH IS EN
206; 2013.



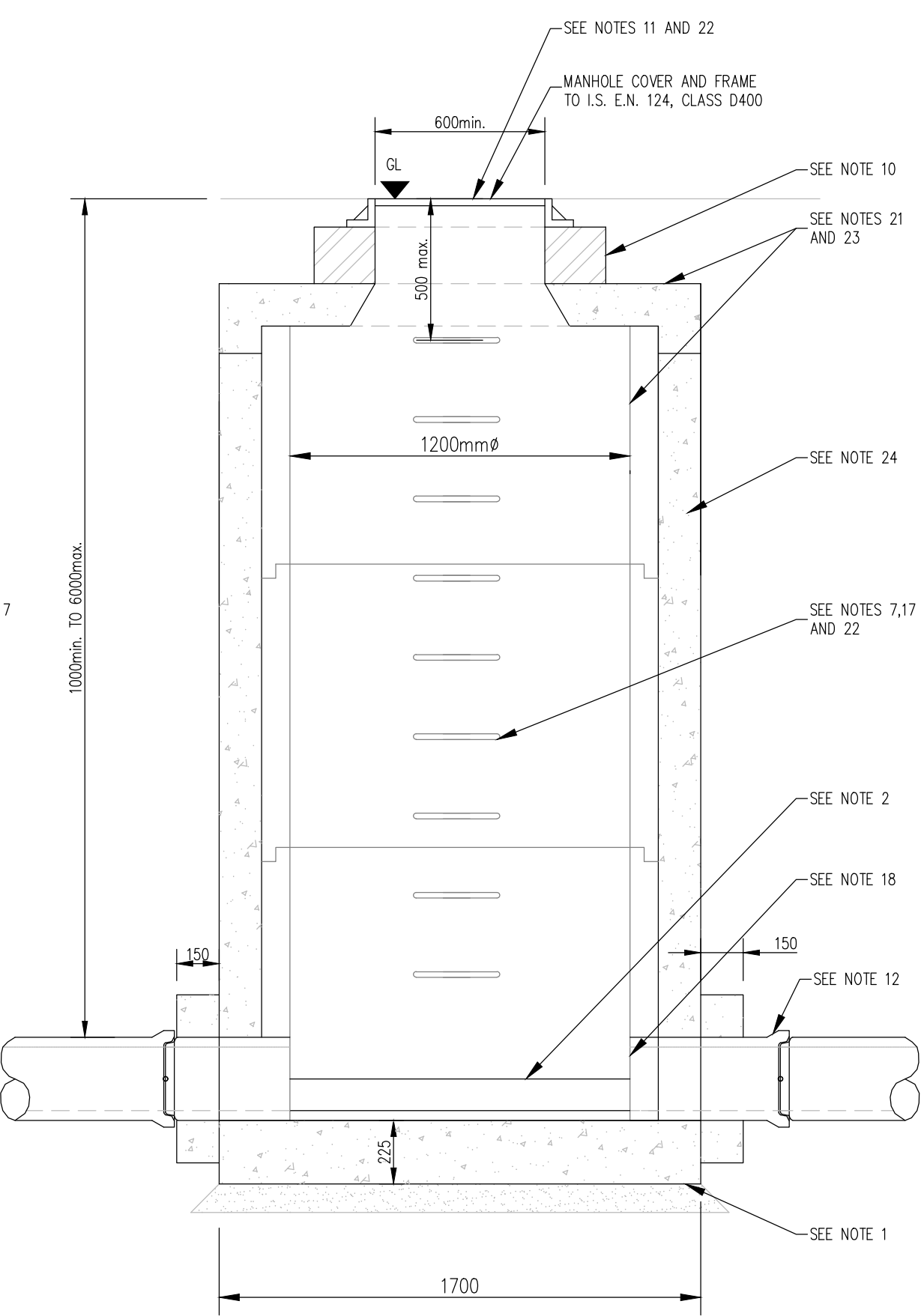
MINIMUM MANHOLE DIAMETERS "D"	
DIAMETER OF LARGEST PIPE IN MANHOLE (mm)	INTERNAL DIAMETER OF MANHOLE (mm)
LESS THAN 375	1200
375 TO 450	1350
500 TO 750	1500



FOUL MANHOLES TO IRISH WATER SPECIFICATIONS
(STD-WW-10)
SCALE : 1/20



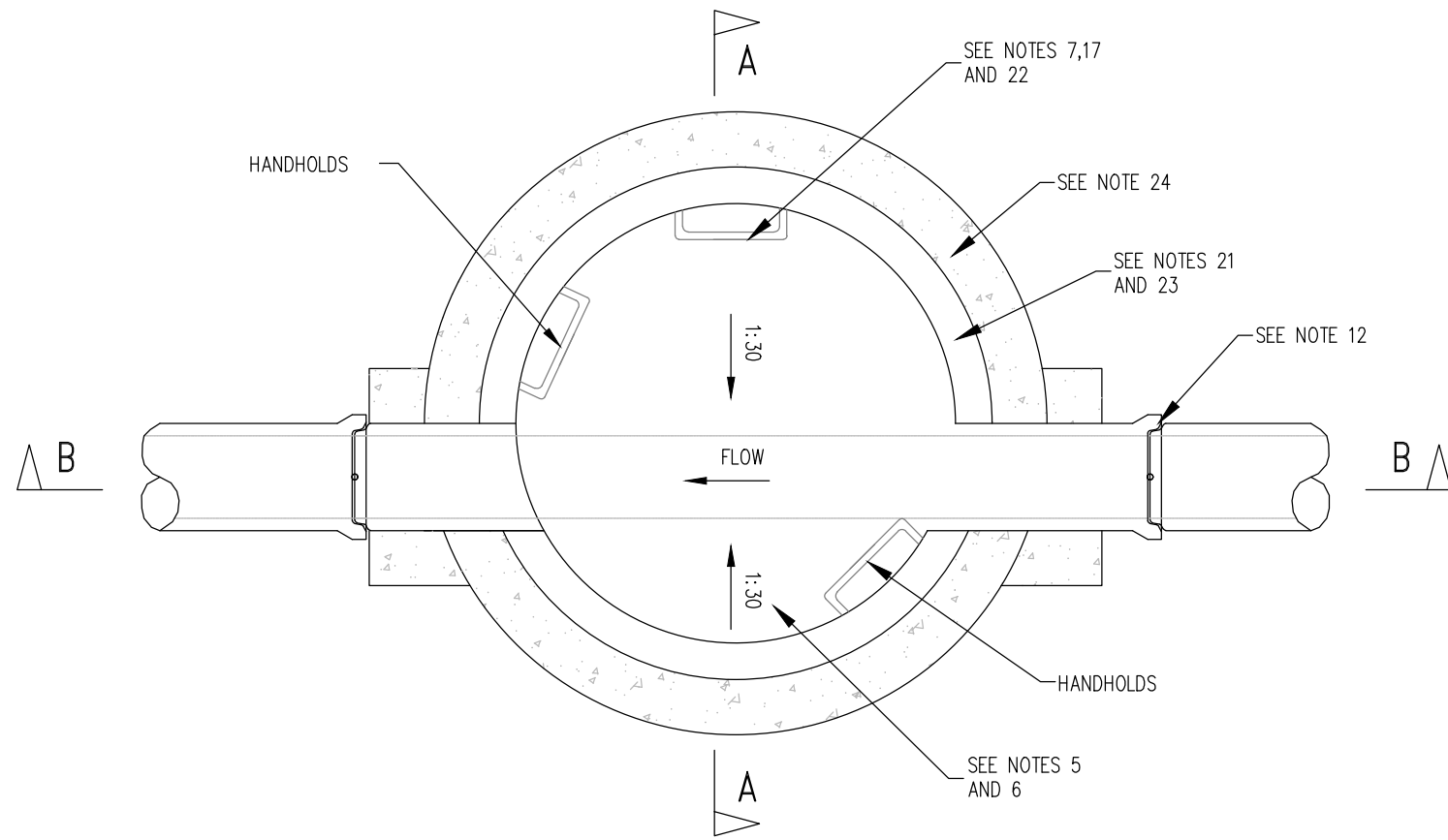
TYPE J MANHOLE (PRECAST)
SECTION A-A
SCALE 1:20



TYPE J MANHOLE (PRECAST)
SECTION B-B
SCALE 1:20

NOTE:
CHAMBER COVERS TO BE CLASS D400

MANHOLE PIPE DIAMETER	CHAMBER INTERNAL DIAMETER
225mmø	1200mmø
300mmø	1200mmø
375mmø	1200mmø
450mmø	1200mmø
525mmø	1200mmø
600mmø	1200mmø
675mmø	1350mmø
750mmø	1350mmø
900mmø	1500mmø
1050mmø	2100mmø
1200mmø	2100mmø



TYPE J MANHOLE (PRECAST)
PLAN
SCALE 1:20

SURFACE WATER MANHOLES TO WICKLOW COUNTY COUNCIL SPECIFICATIONS
SCALE : 1/20

PLANNING DRAWING.
NOT FOR CONSTRUCTION.
ALL LEVELS GIVEN ARE
RELATIVE TO ORDNANCE DATUM.
THIS DRAWING HAS BEEN ISSUED FOR INFORMATION
PURPOSES ONLY AND MUST NOT BE USED
FOR CONSTRUCTION UNDER ANY CIRCUMSTANCES

- ## NOTES
1. For setting out refer to Architect's drawings.
 2. This drawing to be read in conjunction with all other Architectural and Engineering drawings and all other relevant drawings and Specifications.
 3. **DO NOT SCALE THIS DRAWING.** Use figured dimensions only.
 4. No part of this document may be reproduced or transmitted in any form or stored in any retrieval system of any nature without the written permission as copyright holder except as agreed for use on the project for which the document was originally issued.
 5. Ordnance Survey Ireland Licence Number EN 0074022

[illegible]

Architect:	COADY ARCHITECTS				
Project	DEVELOPMENT AT DEVJOY BARRACKS, NAAS				
Title	Drainage Details Sheet 1 Of 3				
Dwg. No.	DEV-CSC-00-XX-DR-C-0110				
Date	Dwn by	Chkd by	Apprd by	Scale	Revision
29.06.2020	JS	NB	OS	AS SHOWN @ A1	P01

CS Consulting Group

DUBLIN | LONDON | LIMERICK

Head Office
19-22 Dame Street, Dublin 2.
T: +353 (0)1 5480863
E: info@csconsulting.ie
W: www.csconsulting.ie



Quality
ISO EN ISO 9001:2008



Environment
ISO EN ISO 14001:2004



Energy
ISO EN ISO 50001:2011



NSAI
Certified



OHSAS 18001:2007