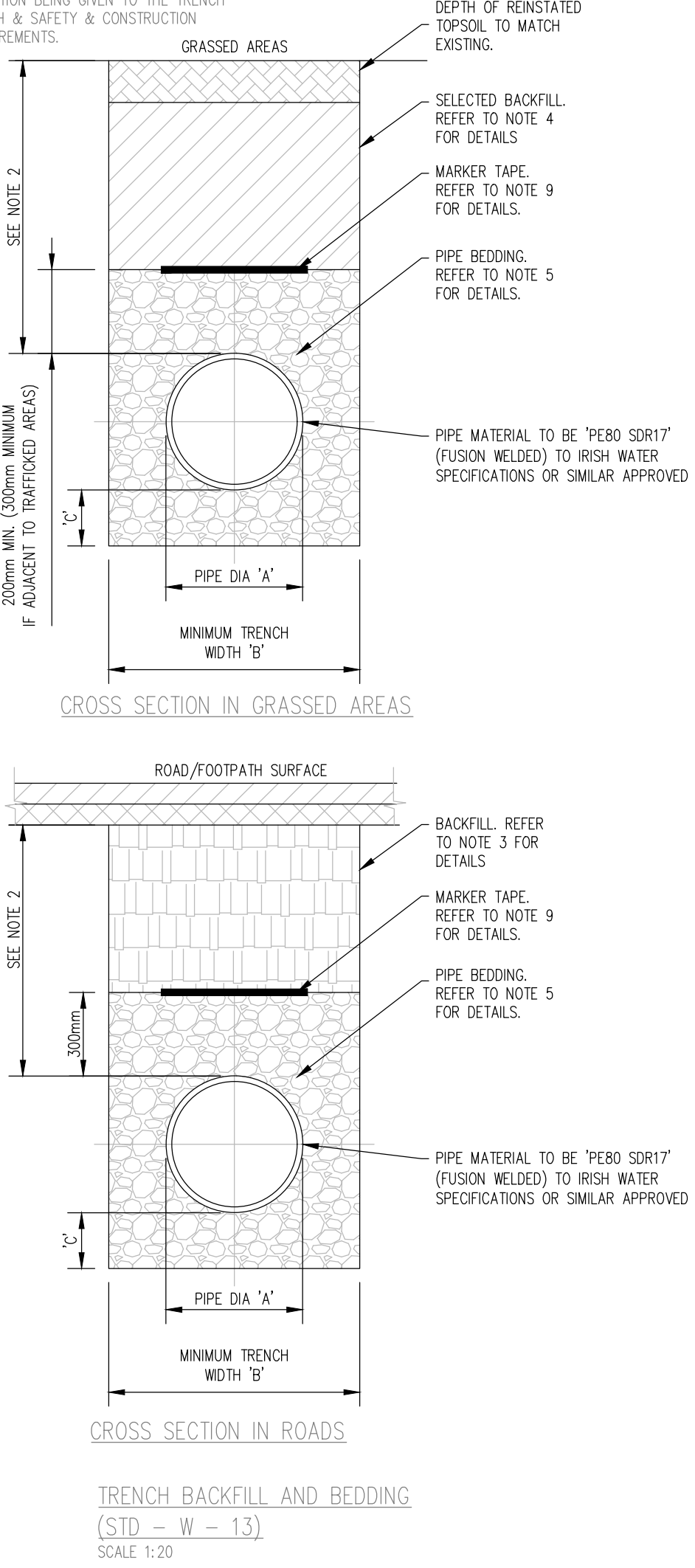
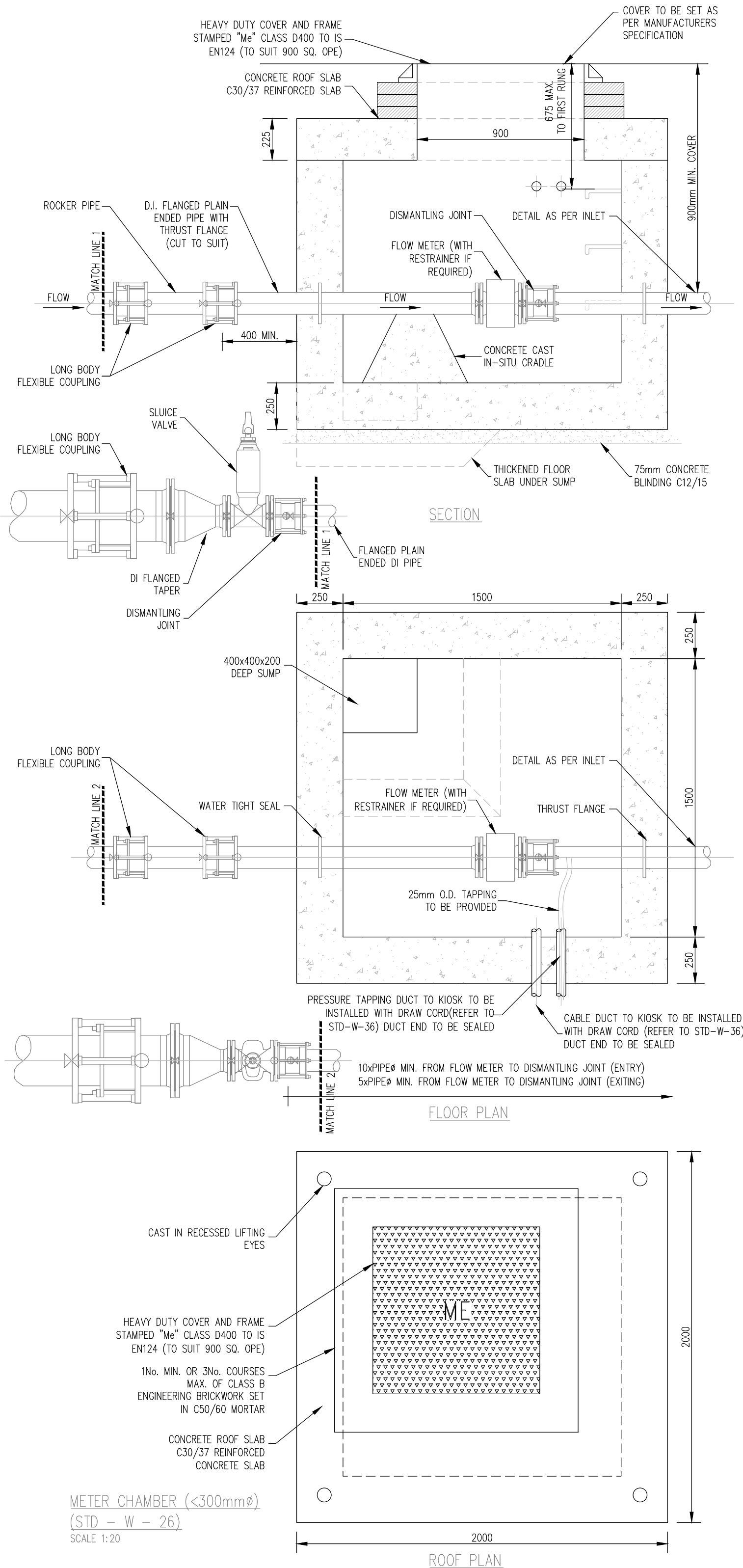


NOTES: BE GRANULAR SUPPORTED MATERIAL. 1 ALL DIMENSIONS ARE IN MILLIMETRES (mm) ON SHALL UNLESS NOTED OTHERWISE. STONES BE OR LAD 2 THE MINIMUM DEPTH OF COVER FROM THE ROCKS ABOVE FINISHED SURFACE TO THE EXTERNAL CROWN OR THIS OF THE PIPE SHALL BE 750mm FOR SERVICE ANY VOID CONNECTIONS, 900mm FOR WATER MAINS. HARD BACKFILL GREATER DEPTHS OF COVER AND/OR PIPE OBJECT MATERIAL STRENGTH AND/OR A HIGHER CLASS OF AT BEDDING MATERIAL MAY BE REQUIRED WHERE 8 ANY HIGH TRAFFIC LOADING IS ANTICIPATED. THE SHOULD POINT MAXIMUM COVER SHOULD NOT EXCEED 1.2M MINIMUM ALONG WHERE PRACTICABLE. COVER THE NOT 3 CLAUSE 808 MATERIAL IN ACCORDANCE WITH TRENCH. BE THE TRANSPORT INFRASTRUCTURE IRELAND ROCK ACHIEVABLE. SPECIFICATION FOR ROAD WORKS IS TO BE SHALL CONCRETE USED AS BACKFILL MATERIAL WHERE THE BE GRADE WATER MAIN IS LOCATED IN ROADS, EXCAVATED C8/10 FOOTPATHS OR WHEN THE NEAREST PART OF TO SHALL THE TRENCH IS WITHIN 1M OF THE PAVED A BE EDGE OF THE ROADWAY, CLAUSE 808 IS TO DEPTH USED BE COMPACTED AS PER CLAUSE 802 OF THE OF AS TRANSPORT INFRASTRUCTURE IRELAND 150mm BACKFILL SPECIFICATION FOR ROAD WORKS. BELOW MATERIAL. THE 4 SELECTED EXCAVATED MATERIAL MAY BE USED ACTUAL 9 IN GREEN-FIELD AREAS ABOVE GRANULAR DEPTH MARKER PIPE SURROUND MATERIAL SUBJECT TO THE OF TAPE APPROVAL OF IRISH WATER. THE TO 5 PIPE BEDDING SHALL COMPLY WITH WIS TRENCH BE 4-08-02 AND ION 4-08-01 GRANULAR WITH 400mm MATERIAL SHALL BE 14mm TO 5mm GRADED THE WIDE AGGREGATE OR 10mm SINGLE SIZED VOID BLUE AGGREGATE IS EN 13242. FILLED POLYETHYLENE WITH MATERIAL 6 IN SOFT GROUND CONDITIONS (CBR < 5) THE CLAUSE IN MATERIAL SHOULD BE EXCAVATED OUT AND 804 ACCORDANCE DISPOSED OF IN ACCORDANCE WITH THE MATERIAL WITH WASTE MANAGEMENT ACT AND CLAUSE 808 IN EN MATERIAL IN ACCORDANCE WITH THE ACCORDANCE 12163, TRANSPORT INFRASTRUCTURE IRELAND WITH PLASTIC SPECIFICATION FOR ROAD WORKS SHALL THE PIPES REPLACE THE EXCAVATED MATERIAL, WRAPPED TRANSPORT SHALL IN GEO-TEXTILE WRAPPING, ALTERNATIVELY, INFRASTRUCTURE HAVE SPECIAL PIPE SUPPORT ARRANGEMENTS, IRELAND WARNING INCLUDING PLING ETC. MAY BE REQUIRED SPECIFICATION TAPE WHERE THE DEPTH OF SOFT MATERIAL IS FOR INCORPORATED EXCESSIVE. SUCH ARRANGEMENTS SHALL BE ROAD A SUBJECT TO ASSESSMENT BY IRISH WATER WORKS. REINFORCED BEFORE ADVANCING WITH THE WORK. THE BAND 7 BRACING PIPES WIRE. SHALL SERVICE NOT PIPES SHALL HAVE 200mm WIDE MESH TAPE. MARKER TAPE TO BE LAID AT TOP OF PIPE BEDDING LAYER. 10 TRENCH WIDTHS FOR PIPE SIZES <80mm MAY BE <500mm, SUBJECT TO CONSIDERATION BEING GIVEN TO THE TRENCH DEPTH, HEALTH & SAFETY & CONSTRUCTION ACCESS REQUIREMENTS.

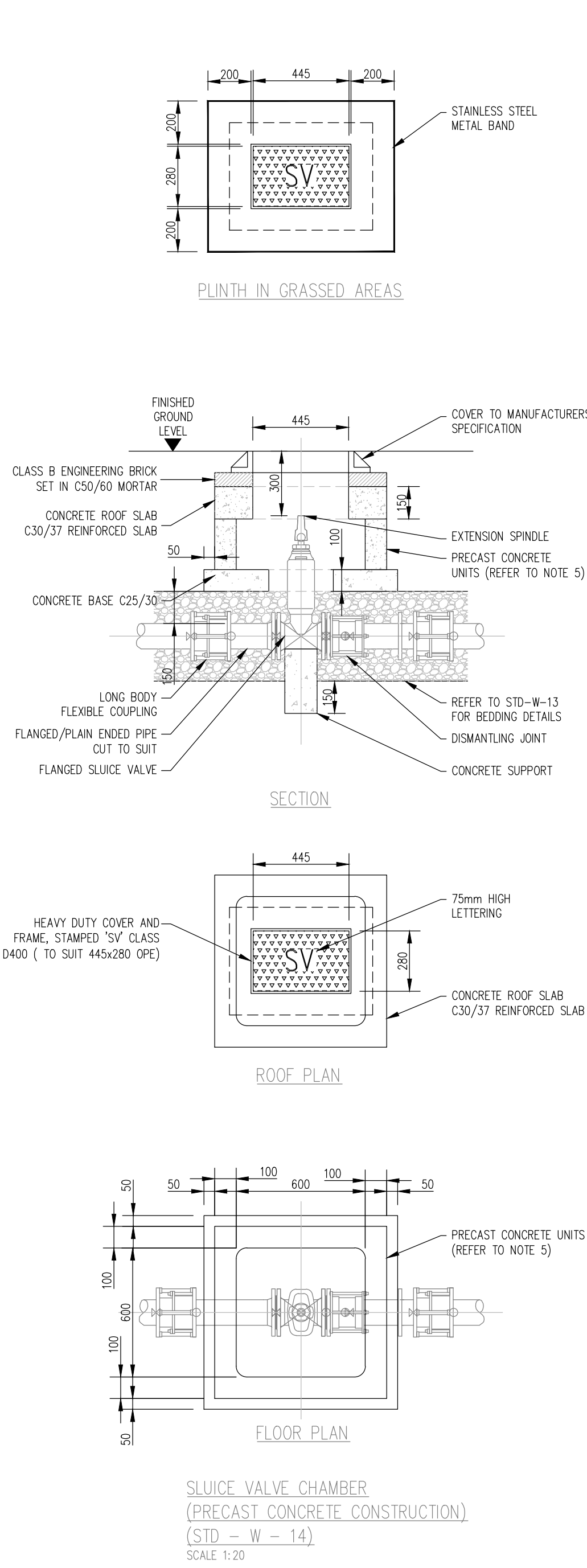
PIPE DIAMETER 'A' (mm)	DEPTH OF BEDDING 'C' (mm)
< 200	150
> 250	200
PIPE DIAMETER 'A' (mm)	TRENCH WIDTH 'B' (mm)
< 80	< SEE NOTE 10.
100	500
150	600
200	600
250	750
300	750
350	750
400	900
450	900



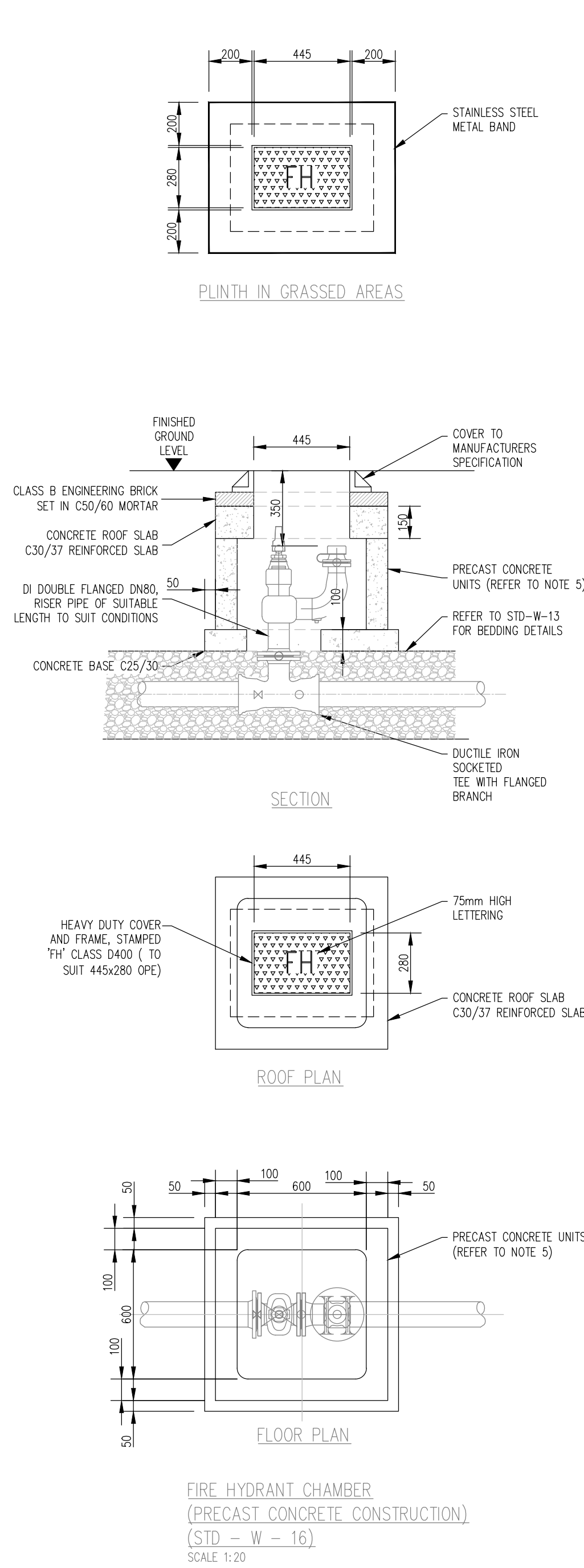
- NOTES:
- ALL DIMENSIONS ARE IN MILLIMETRES (mm) UNLESS NOTED OTHERWISE.
 - STRUCTURAL DESIGN AND REINFORCEMENT DETAIL TO BE PROVIDED BY THE DEVELOPER AND SUBMITTED TO IRISH WATER FOR REVIEW.
 - CONCRETE FOR FLOW METER CHAMBER TO BE C30/37
 - PRECAST METER CHAMBER(WITH CONCRETE SURROUND) MAY BE USED SUBJECT TO IRISH WATER APPROVAL.
 - METER CHAMBER SHALL BE COVERED WITH APPROVED HEAVY DUTY METAL COVERS TO
 - 200mm ALL AROUND, 100mm DEEP CONCRETE PLINTH WITH PROTECTIVE STAINLESS STEEL METAL BAND AROUND COVER IN GRASS AREAS.
 - ANTI CORROSION TAPE TO BE PROVIDED AROUND BURIED FLANGES.
 - DUCTILE IRON PIPES AND FITTINGS TO BE IN ACCORDANCE WITH IS EN545. PE PIPES AND FITTINGS TO BE IN ACCORDANCE WITH IS EN 12201:2011.
 - ALL CHAMBERS TO BE CHECKED FOR UPLIFT



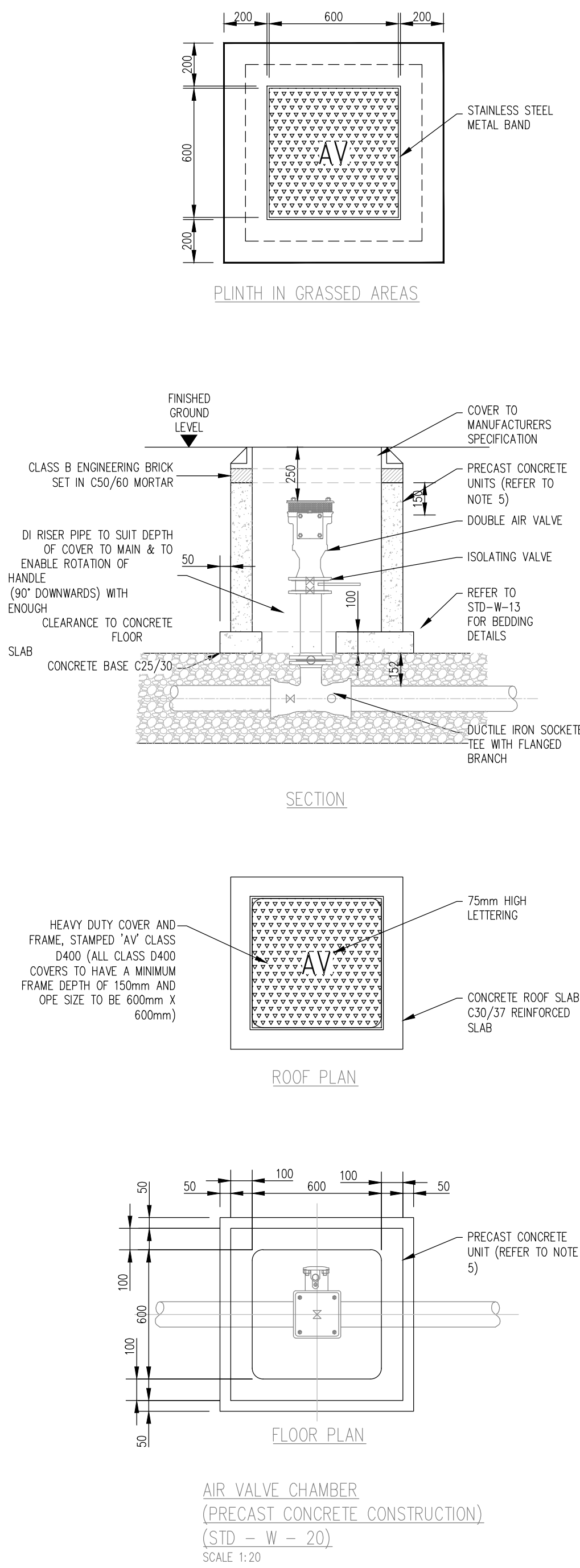
- NOTES:
- ALL DIMENSIONS ARE IN MILLIMETRES (mm) UNLESS NOTED OTHERWISE.
 - SLUICE VALVE CHAMBERS SHALL BE COVERED WITH APPROVED HEAVY DUTY METAL COVERS TO IS 261 OR BS 5834. COVER AND FRAME SHALL BE SUITABLE FOR ROAD AND TRAFFIC CONDITIONS AND IS SUBJECT TO THE APPROVAL OF IRISH WATER
 - SLUICE VALVES SHALL BE RESILIENT SEATED AND SHALL COMPLY WITH BS 5163-1, BS 5163-2, IS EN 1074-1, IS EN 1074-2, OR EQUIVALENT EU SPECIFICATIONS.
 - ALL SLUICE VALVES SHALL BE ANTI-CLOCKWISE CLOSING.
 - VALVE CHAMBER TO BE CONSTRUCTED OF PRECAST CONCRETE UNITS OR HIGH DENSITY BLOCKWORK. ALTERNATIVELY PROPRIETARY PREFABRICATED CHAMBER UNITS MAY ALSO BE USED SUBJECT TO APPROVAL FROM IRISH WATER.
 - CONCRETE CHAMBERS SHALL BE SURROUNDED BY A MINIMUM OF 150mm COMPACTED CLAUSE 808 MATERIAL AS PER STD-W-13.
 - DUCTILE IRON PIPES AND FITTINGS TO BE IN ACCORDANCE WITH IS EN 545.
 - 200mm ALL AROUND, 100mm DEEP CONCRETE PLINTH WITH PROTECTIVE STEEL METAL BAND AROUND COVER IN GREEN AREAS.
 - THRUST BLOCKS(NOT SHOWN ON DRAWING) TO BE PROVIDED AS PER STANDARD DRAWING STD-W-28 AT ALL TEES AND BENDS, TAPERS, DEAD ENDS AND PIPES AT STEEP SLOPES.
 - ANTICORROSION TAPE TO BE PROVIDED AROUND BURIED FLANGES.
 - ALL CONCRETE TO BE IN ACCORDANCE WITH IS EN 206
 - ALL THRUST FLANGES TO BE ADEQUATELY RESTRAINED BY THRUST BLOCKS AS PER DRAWING No. STD-W-28. THRUST BLOCKS NOT SHOWN FOR CLARITY



- NOTES:
- ALL DIMENSIONS ARE IN MILLIMETRES (mm) UNLESS NOTED OTHERWISE.
 - HYDRANT CHAMBERS SHALL BE COVERED WITH APPROVED HEAVY DUTY METAL COVERS TO IS 261 OR BS 5834. COVER AND FRAME SHALL BE SUITABLE FOR ROAD AND TRAFFIC CONDITIONS AND IS SUBJECT TO THE APPROVAL OF IRISH WATER
 - ALL HYDRANTS, SURFACE BOX FRAMES AND COVERS SHALL COMPLY WITH THE RELEVANT PROVISIONS OF IS EN 14339, IS EN 1074-6 & BS 750. FIRE HYDRANTS SHALL BE TYPE 2. THE HYDRANT INLET SHALL BE 80mm DIAMETER WITH PN16.
 - ALL HYDRANTS SHALL BE CLOCKWISE CLOSING.
 - VALVE CHAMBER TO BE CONSTRUCTED OF PRECAST CONCRETE UNITS OR HIGH DENSITY BLOCKWORK. ALTERNATIVELY PROPRIETARY PREFABRICATED CHAMBER UNITS MAY ALSO BE USED SUBJECT TO APPROVAL FROM IRISH WATER.
 - CONCRETE CHAMBERS SHALL BE SURROUNDED BY A MINIMUM OF 150mm COMPACTED CLAUSE 808 MATERIAL AS PER STD-W-13.
 - DUCTILE IRON PIPES AND FITTINGS TO BE IN ACCORDANCE WITH IS EN 545.
 - 200mm ALL AROUND, 100mm DEEP CONCRETE PLINTH WITH PROTECTIVE STEEL METAL BAND AROUND COVER IN GREEN AREAS.
 - THRUST BLOCKS(NOT SHOWN ON DRAWING) TO BE PROVIDED AS PER STANDARD DRAWING STD-W-28 AT ALL TEES AND BENDS, TAPERS, DEAD ENDS AND PIPES AT STEEP SLOPES.
 - ANTICORROSION TAPE TO BE PROVIDED AROUND BURIED FLANGES.
 - ALL CONCRETE TO BE IN ACCORDANCE WITH IS EN 206



- NOTES:
- ALL DIMENSIONS ARE IN MILLIMETRES (mm) UNLESS NOTED OTHERWISE.
 - AIR VALVE CHAMBERS SHALL BE COVERED WITH APPROVED VENTILATED HEAVY DUTY METAL COVERS TO IS EN 124 RATING D400. COVER AND FRAME SHALL BE SUITABLE FOR ROAD AND TRAFFIC CONDITIONS AND IS SUBJECT TO THE APPROVAL OF IRISH WATER
 - AIR VALVES SHALL COMPLY WITH THE REQUIREMENTS OF IS EN 1074-4. AIR VALVES SHALL BE SOOED ORIFICE TYPE AND SHALL INCLUDE AN ISOLATING VALVE. THE ISOLATING VALVE SHALL BE A GATE VALVE CONFORMING TO IS EN 1074-2 AND SHALL BE OF A BOLTLESS BONNET DESIGN
 - THE AIR VALVES SHALL OF BODIES AND COVERS OF CAST IRON TO BS EN 1563 WITH FLANGES DRILLED TO PN 16 IN ACCORDANCE WITH BS EN 1092. EACH VALVE SHALL HAVE A LARGE AND A SMALL AIR ESCAPE ORIFICE WITH AN ISOLATING VALVE.
 - SERVICE CONNECTIONS SHALL NOT BE PROVIDED WITHIN 2m OF THE AIR VALVE LOCATION.
 - AIR VALVE CHAMBERS TO BE OF PRECAST CONCRETE UNITS OR HIGH DENSITY
 - BLOCKWORK. ALTERNATIVE PROPRIETARY PREFABRICATED CHAMBER UNITS MAY ALSO BE USED, SUBJECT TO APPROVAL FROM IRISH WATER.
 - PRECAST CONCRETE CHAMBERS SHALL BE SURROUNDED BY A MINIMUM OF 150mm COMPACTED CLAUSE 808 MATERIAL AS PER STD-W-13.
 - DUCTILE IRON PIPES AND FITTINGS TO BE IN ACCORDANCE WITH IS EN 545.
 - 200mm ALL AROUND, 100mm DEEP CONCRETE PLINTH WITH PROTECTIVE STEEL METAL BAND AROUND COVER IN GREEN AREAS.
 - THRUST BLOCKS(NOT SHOWN ON DRAWING) TO BE PROVIDED AS PER STANDARD DRAWING STD-W-28 AT ALL TEES AND BENDS, TAPERS, DEAD ENDS AND PIPES AT STEEP SLOPES.
 - ANTICORROSION TAPE TO BE PROVIDED AROUND BURIED FLANGES.
 - THE LOCATION OF THE AIR VALVE SHALL BE THE SUBJECT OF PARTICULAR AGREEMENT WITH IRISH WATER TO ENSURE THAT THE RISK OF CONTAMINATION THROUGH THE VALVE IS ELIMINATED.
 - ALL CONCRETE TO BE IN ACCORDANCE WITH IS EN 206



PLANNING DRAWING.
NOT FOR CONSTRUCTION.
ALL LEVELS GIVEN ARE
RELATIVE TO ORDNANCE DATUM.
THIS DRAWING HAS BEEN ISSUED FOR INFORMATION
PURPOSES ONLY AND MUST NOT BE USED
FOR CONSTRUCTION UNDER ANY CIRCUMSTANCES

- NOTES
- For setting out refer to Architect's drawings.
 - This drawing to be read in conjunction with all other Architectural and Engineering drawings and all other relevant drawings and Specifications.
 - DO NOT SCALE THIS DRAWING. Use figured dimensions only.
 - No part of this document may be reproduced or transmitted in any form or stored in any retrieval system of any nature without the written permission as copyright holder except as agreed for use on the project for which the document was originally issued.
 - Ordnance Survey Ireland Licence Number EN 0074022

Rev. No.	Date	REVISION NOTE	Dm. By	Chkd. By
P01	26.03.2021	ISSUED FOR PLANNING	AB	GL

Client Project	COADY ARCHITECTS DEVOY BARRACKS, NAAS WATERMAIN DETAILS SHEET 1 OF 2
Title	DEV-CSC-00-XX-DR-C-0114
Dwg. No.	DEV-CSC-00-XX-DR-C-0114
Date	SEPT '20
Dm by	AB
Chkd by	GL
Apvd by	NB
Scale	AS SHOWN @ A1
Revision	P01
Quality	NSAI Certified
Environment	I.S. EN ISO 9001:2008
Energy	I.S. EN ISO 14001:2004
Health & Safety	I.S. EN ISO 50001:2011
	CHSAS 18001:2007

