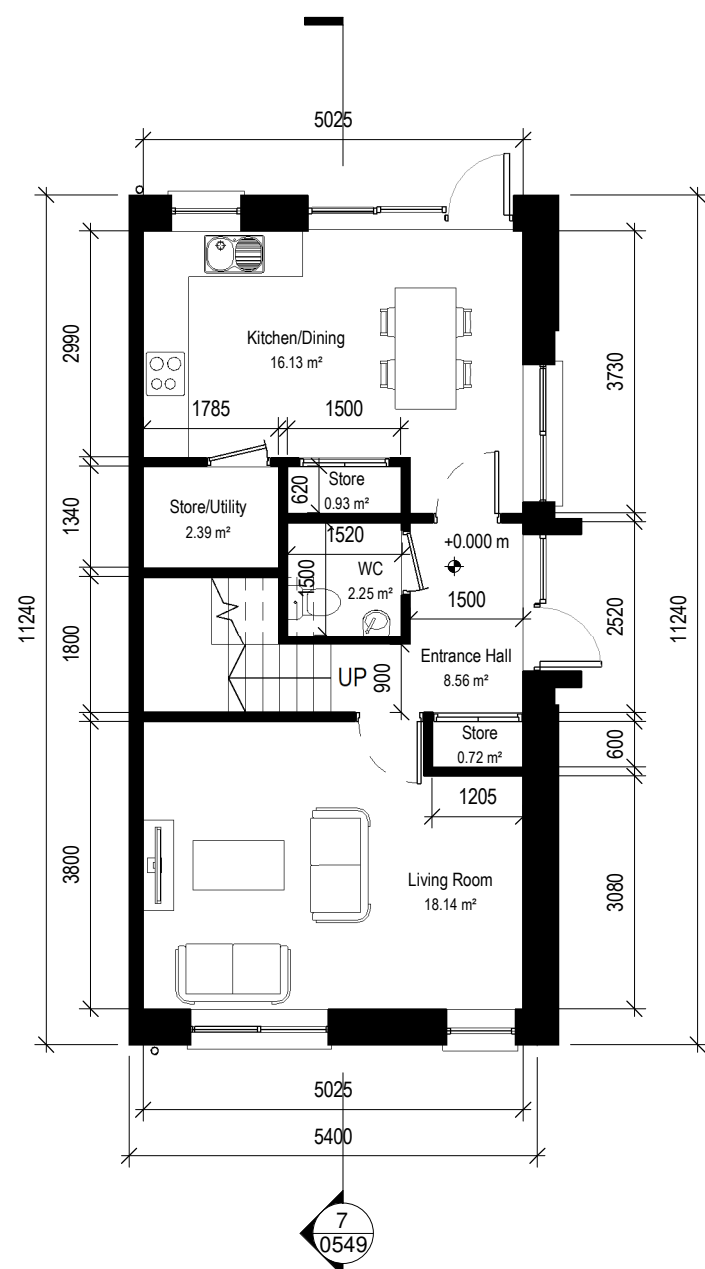
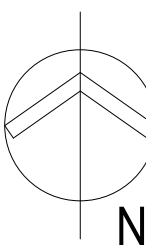


Notes:
Do not scale from this drawing.
Use figured dimensions only.
All errors and omissions to be reported to the Architect.
This drawing to be read in conjunction with relevant consultant's drawings.
All dimensions are in millimetres and all levels are in meters to match Datums unless otherwise noted.
All levels given are relevant to ordance Datum.

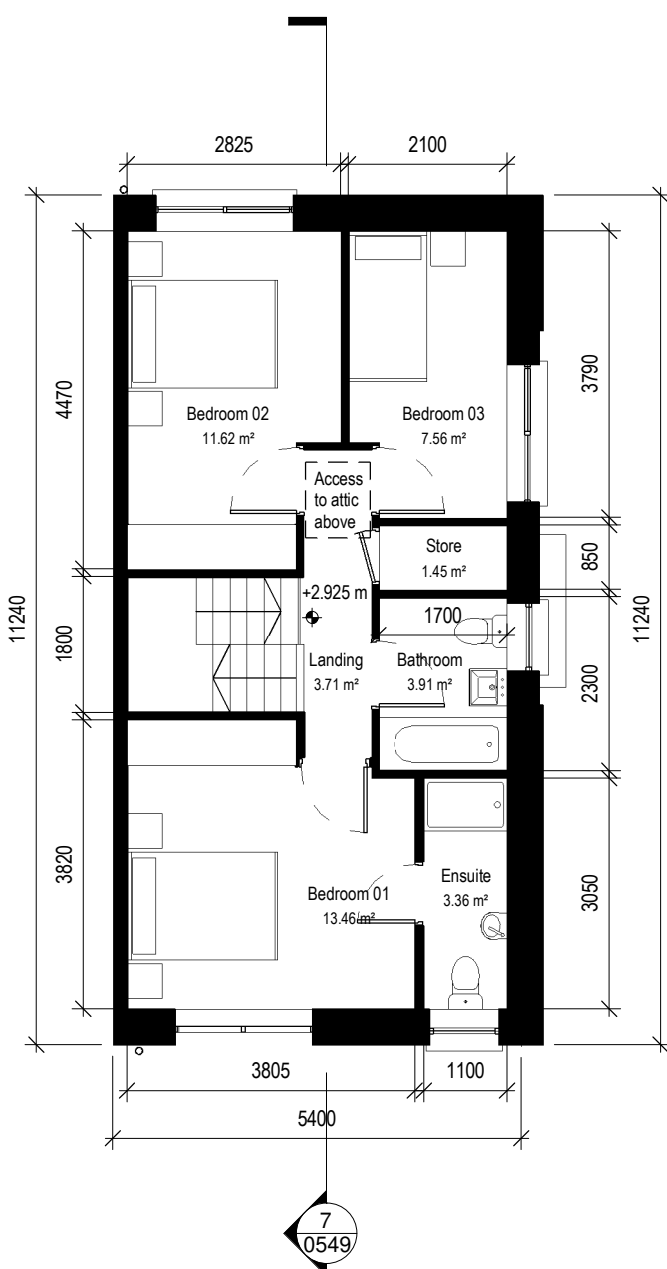
Contractor Design Responsibility
It is noted that there are many elements within the works that require contractor design, and will be subject to certification as part of BCAR – see Preliminary Inspection Plan for clarity on certification required.

© This drawing or design may not be reproduced without permission.

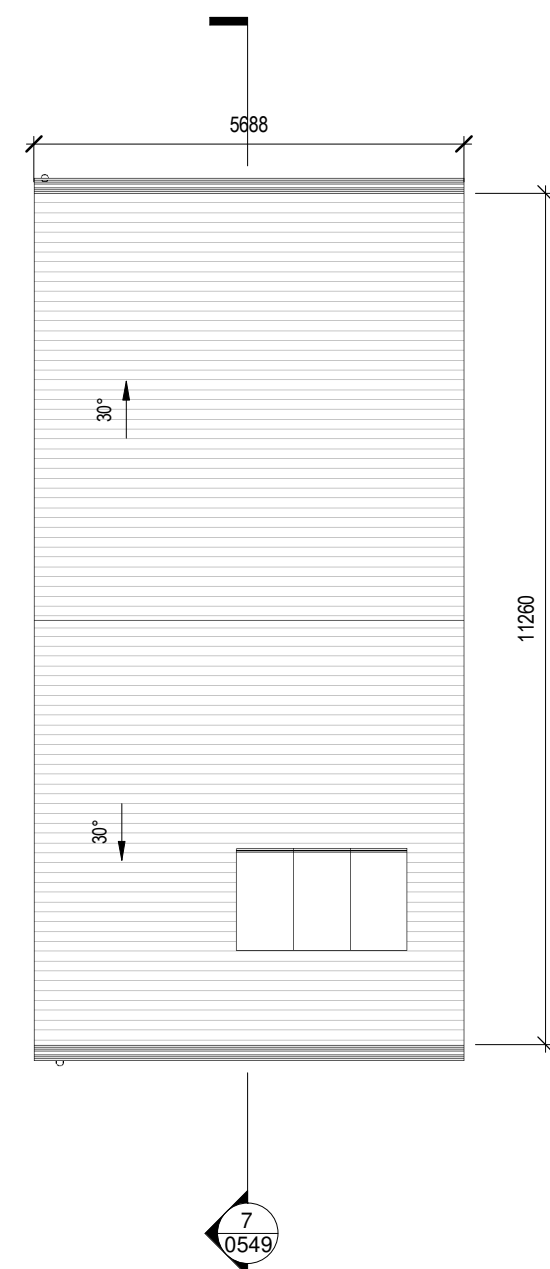
Key Plan - Type F3:



1 Unit-Type-F3-00-Ground Floor
1 : 100



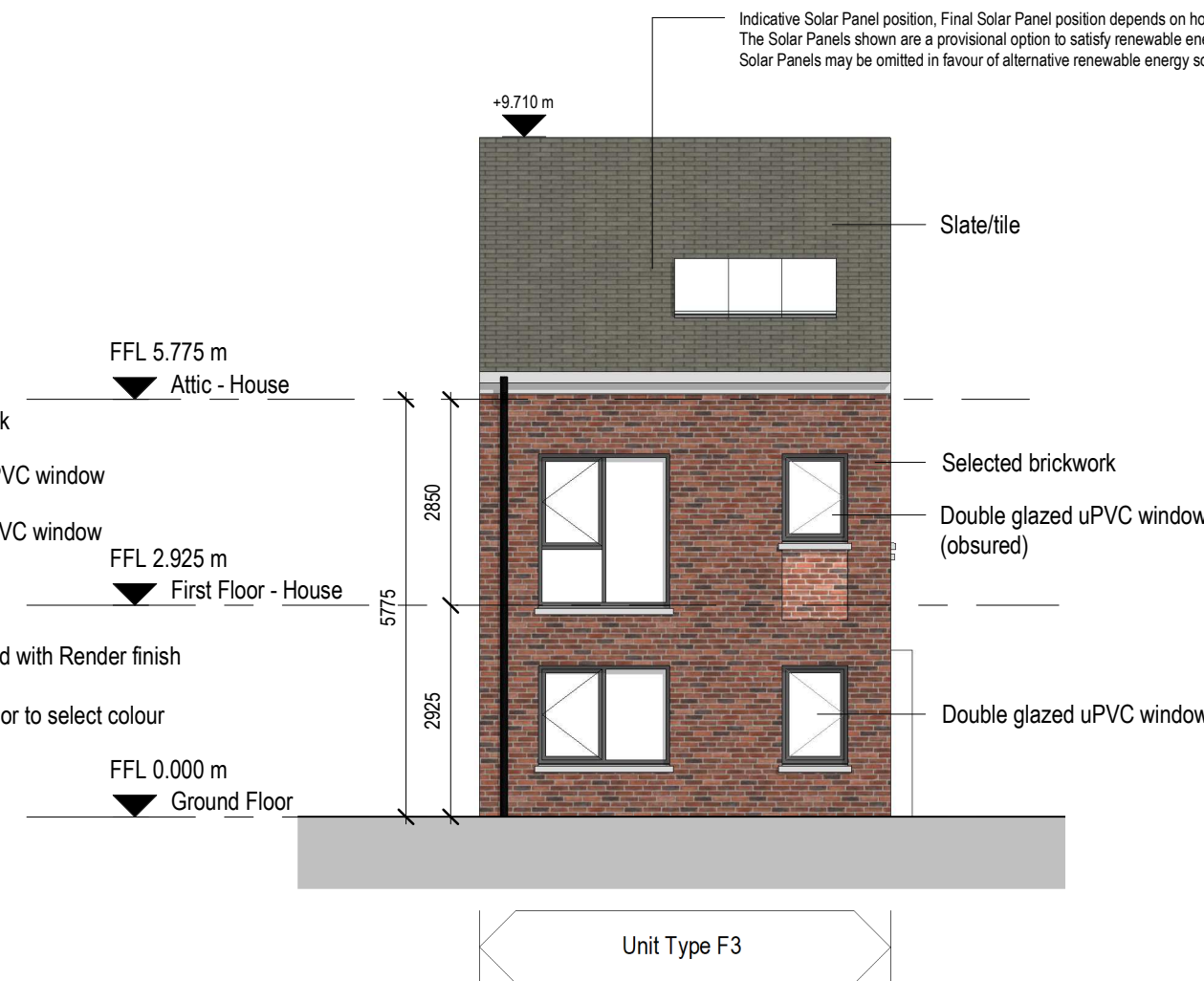
2 Unit-Type-F3-01-First Floor
1 : 100



3 Unit-Type-F3-RF-Roof
1 : 100



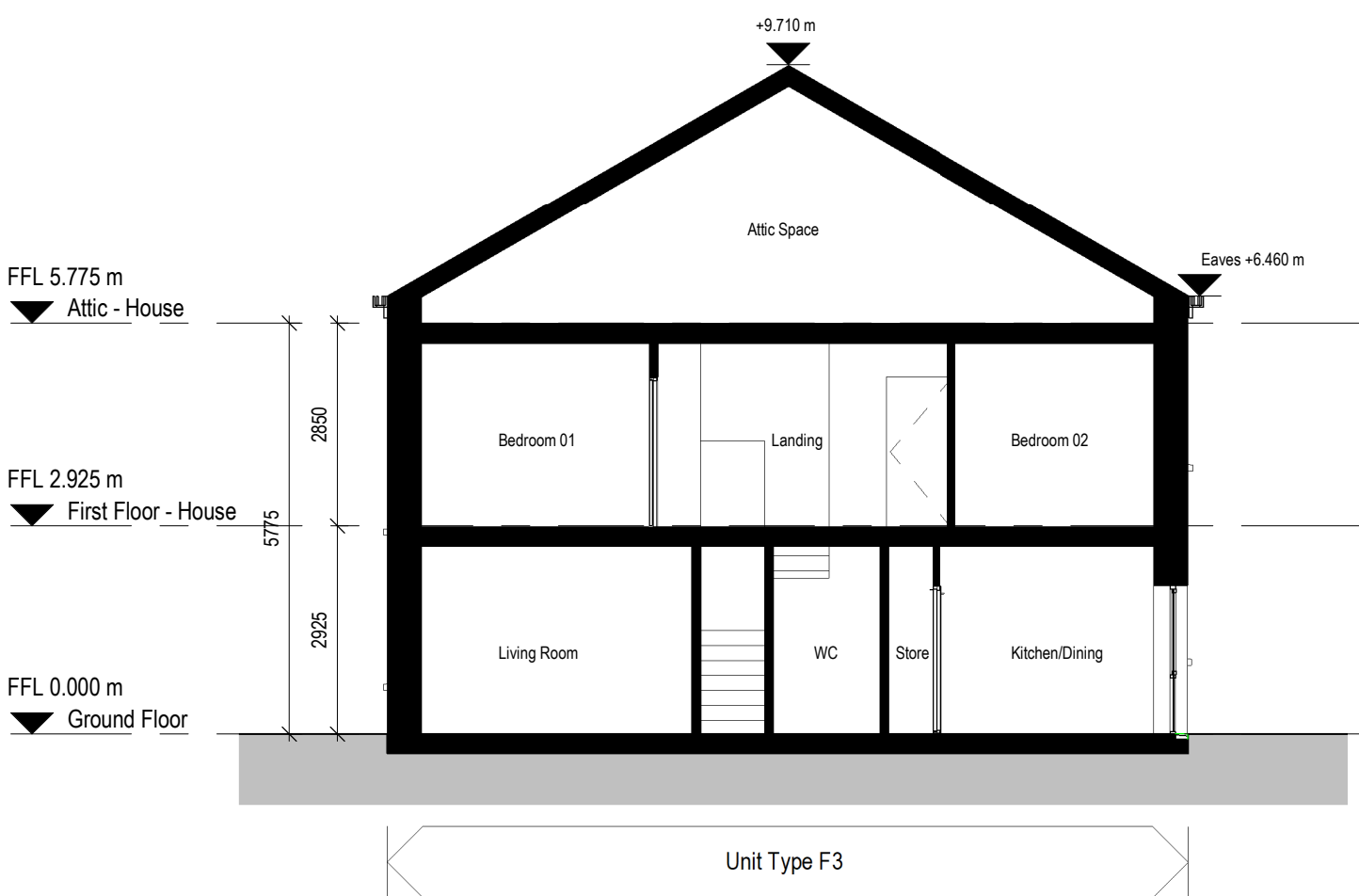
4 House Type F3 - Front Elevation
1 : 100



5 Unit-Type-F3-Side Elevation
1 : 100



6 Unit-Type-F3-Garden Elevation
1 : 100



7 Unit-Type-F3-Section A
1 : 100

2569 - Unit Type F3 - 3 Bed House (2 Storey Unit) - Gross Internal Area		
Name	Area	DoHPLG Min. Area
Ground Floor	51.71 m²	
First Floor	51.70 m²	
Grand total: 2	103.41 m²	92.00 m²

2569 - Unit Type F3 - 3 Bed House (2 Storey Unit) - Aggregate Area Provisions		
Department	Area	DoHPLG Min.
Aggregate Bedroom Area	32.64 m²	32.00 m²
Aggregate Living Area	34.28 m²	34.00 m²

2569 - Unit Type F3 - 3 Bed House (2 Storey Unit) - Storage Provisions		
Department	Area	DoHPLG Min.
Storage	9.09 m²	9.00 m²

Note: For Unit Type F3, DoHPLG Min. Area refers to the standards set out in the document by Department of Environment, Heritage and Local Government, Quality Housing for Sustainable Communities - Best Practice Guidelines for Delivering Homes, Sustaining Communities (2007)

Note: For storage in Unit Type F3, DoHPLG min. area refer to standards set out in Table 17.4 of the Kildare County Development Plan (2017-2023)

2569 - Unit Type F3 - 3 Bed House (2 Storey Unit) - Room Area Provisions		
Name	Area	DoHPLG Min. Area
Bedroom 01	13.46 m²	13.00 m²
Bedroom 02	11.62 m²	11.40 m²
Bedroom 03	7.56 m²	7.10 m²

2569 - Unit Type F3 - 3 Bed House (2 Storey Unit) - Room Width Provisions		
Name	Room Width	DoHPLG Min. Room Width
Bedroom 01	3805mm	2800mm
Bedroom 02	2825mm	2800mm
Bedroom 03	2100mm	2100mm
Kitchen/Dining	3750mm	N/A
Living Room	3800mm	3800mm

Refer to Site Plan for:

- Finished floor levels to survey datum
- Orientation
- Private open space for ground floor - refer to DR-A-0506

Note: Additional storage is provided in the attic space

Revisions:

Rev	Description	Date	By
1	Issued for Planning	06-04-2022	BL

Project:
Devoy Barracks, Naas, Co Kildare

Client:
Land Development Agency

Title:
Unit Type F3 - Proposed Plans, Sections & Elevations

Drawing / Document Name:
Project: Originator Volume Level Type Rate Sheet Number
2569 DEV-COA-00-ZZ-DR-A-0549

Suitability Status : Code - Description
S4 - For Stage Approval
Revision:
P- 1

Scale @ A1 Drawn: Checked: Date:
1 : 100 Brian Lee Eimear McGonigle 02-02-2022

COADY
ARCHITECTS
Mt Pleasant Business Ctr, Ransleigh, Dublin 6, D06 X7P6
Unit 6A Oren Point, Main St, Orlamore, Co. Galway, H91 Y9B6
t: 00353 (0)9048 1204 f: 00353 (0)9048 1205 e: info@coady.ie w: www.coady.ie

MCORM
McCROSSAN O'ROURKE MANNING ARCHITECTS